

READY FOR RENDER

CEM GOLD

Cement Board for Interior and Exterior Applications.



Rainscreen Cladding | Steel Frame Systems | Modular Build | Render Carrier Board



FIRE RESISTANT



HIGH IMPACT STRENGTH



WEATHER RESISTANT



STRONG AND EASY TO USE



MOISTURE PROTECTION



ACOUSTIC REDUCTION



Description

Cemgold is composed of Portland Cement, high purity Silica Sand with additives for water and fire resistance.



Applications

Cemgold is a state of the art asbestos free, highly durable and practical board, which can be used in many applications; partition walls, dry lining, suspended ceilings, flooring, SFS Infill, render carrier board and ceramic tiling.

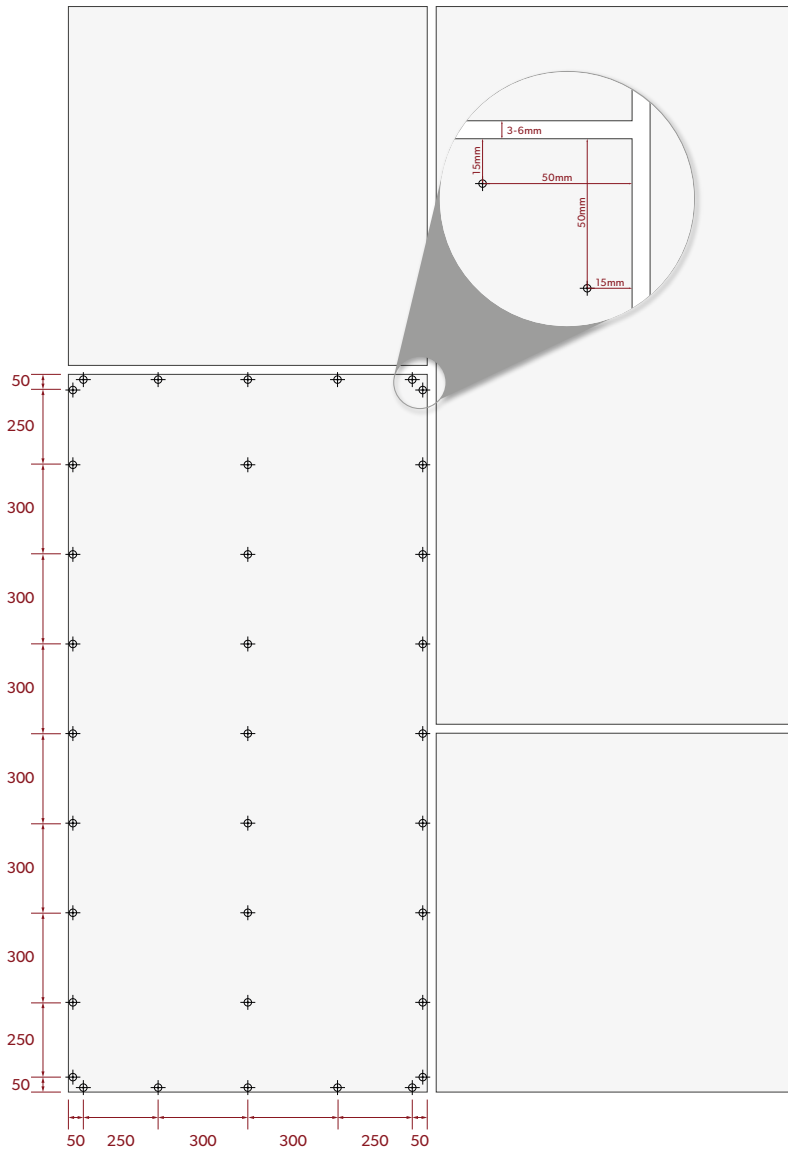
Features

- Cemgold is a high density Cement Board
- Cemgold is impact resistant, A1 incombustible, it is both durable and low maintenance.
- Cemgold is fully tested to BS EN 12467 and is available in 6mm 10mm 12.5mm 16mm & 18mm all 1200mm wide and 2400mm long.
- Cemgold is manufactured to audited EN and ASTM standards and tested in approved laboratories.

Technical Information

Standard Board Size	1200mm x 2400mm				
Thickness	6mm	10mm	12.5mm	16mm	18mm
Weight	23kg	38kg	45kg	56kg	67kg
Edges	Square Edge				
Density	1309 kg/m ³				
Flexural strength Longitudinal	12.74MPa				
Flexural strength Transverse	7.24MPa				
Reaction to Fire	A1 Incombustible Tested to BS EN 13501-1 Tested to BS EN 12467				

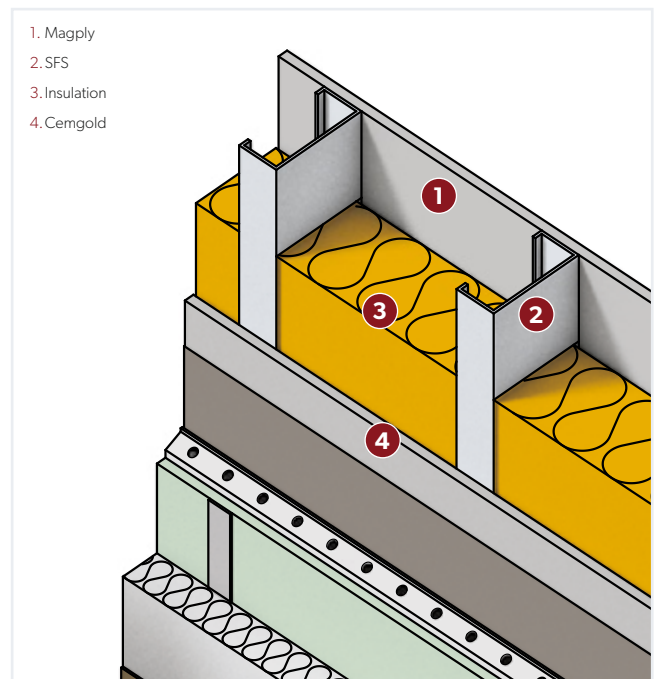
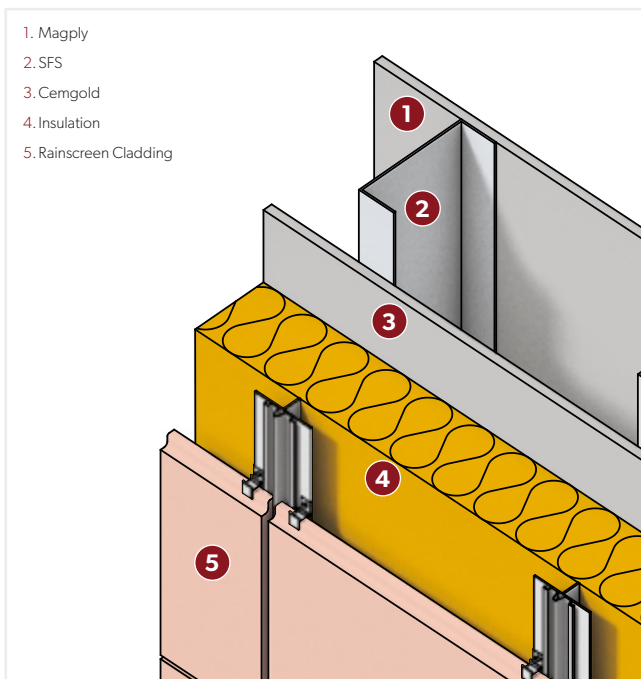




The diagram to the left acts as a guide showing the most common applications when installing Cemgold on 600mm centres:

- Cemgold should be installed in a brick bond fashion, as shown in the diagram.
- The minimum board width should be no less than 600mm and it is not recommended to install Cemgold on four way joints.
- For **steel frame** installation use countersunk stainless steel or galvanised self-tapping Screws 3.5mm - 4.2mm diameter 2.5 to 3 times thickness of board.
- When fixing into **timber frame** use a 4.2mm x 42mm fixing.
- The corner fixings should be 50mm in from the edges.
- Allow a gap of 3-6mm between all joints to allow for expansion and movement.
- Joints should be filled with a FR sealant, alternatively joints can be covered with a 50mm foil tape.
- Cemgold should be cut with tungsten carbide tipped blades at 3000 - 4000rpm boards can be sawn, drilled, planed, routed nailed or screwed.
- When used as a carrier board for external applications designers should pay particular attention to wind loadings. Please consult with IPP and the Structural Engineer for guidance on fixings.
- **A suitable PCD blade is recommended for cutting Magply available from all tool manufacturers including DeWalt, Trend & Dart**

Rainscreen Cladding



Conformity

Cemgold conforms with the requirements of BS EN 634 - 2 1997 Cement Bonded particle boards. The information contained in this publication is based upon the company's general experience and knowledge. Due to factors beyond our knowledge and control no warranty is given or implied with respect to such information.

Appearance of Cemgold can vary so we advise that you ask for samples prior to specification or purchase.

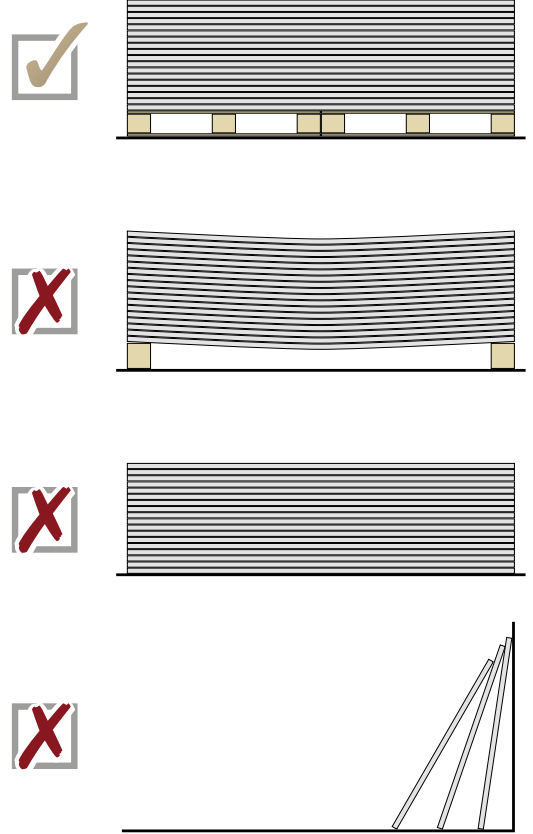
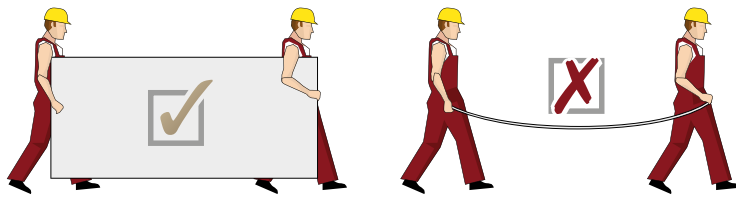
Transport and Storage

Cemgold is delivered secured to a pallet, with the edges and corners protected. Boards should be carried vertically to prevent stress and/or damage to the boards.

Cemgold should be stored flat either on the pallet used for delivery or supports with 800mm centres. Cemgold should never be stored upright or on its edge.

Cemgold has an ex-works moisture content of 9% +/- 3% and is in equilibrium when the temperature is 20°C with relative air humidity of 50-60%.

Cemgold adapts to the ambient humidity level, therefore to adjust to its working conditions it should be allowed to acclimatise for 24-48 hours prior to installation.



OTHER IPP PRODUCTS



AVAILABLE FROM

www.intpetro.com | 01621 776252 | sales@intpetro.com

Bradwell Hall, Bradwell-on-Sea, Southminster, CM0 7HX